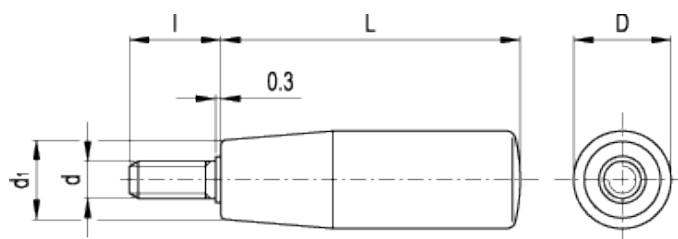


I.280 p

Handles



technical informations

Material

Phenolic based (PF) Duroplast. Resistant to solvents, oils, greases and other chemical agents.

Colour

Black, glossy finish.

Assembly

Zinc-plated steel threaded stud, chamfered flat end according to UNI 947 : ISO 4753 (see [Technical Data](#)).

| Standard Elements | | Main dimensions | | | Threaded stud | | Weight |
|-------------------|-------------------|-----------------|----|----------------|-----------------|----|--------|
| Code | Description | L | D | d ₁ | d _{6g} | l | g |
| 21611 | I.280/40 p-M6x16 | 40 | 18 | 15 | M6 | 16 | 18 |
| 21711 | I.280/50 p-M8x16 | 50 | 21 | 17 | M8 | 16 | 38 |
| 21712 | I.280/50 p-M8x25 | 50 | 21 | 17 | M8 | 25 | 40 |
| 21811 | I.280/65 p-M10x16 | 65 | 23 | 19 | M10 | 16 | 60 |
| 21812 | I.280/65 p-M10x30 | 65 | 23 | 19 | M10 | 30 | 67 |
| 21911 | I.280/80 p-M10x16 | 80 | 26 | 21 | M10 | 16 | 80 |
| 21912 | I.280/80 p-M10x30 | 80 | 26 | 21 | M10 | 30 | 87 |
| 22011 | I.280/90 p-M12x16 | 90 | 28 | 22 | M12 | 16 | 113 |

| | | | | | | | |
|-------|--------------------|-----|----|----|-----|----|-----|
| 22012 | I.280/90 p-M12x30 | 90 | 28 | 22 | M12 | 30 | 122 |
| 22111 | I.280/100 p-M12x16 | 102 | 31 | 25 | M12 | 16 | 142 |
| 22112 | I.280/100 p-M12x30 | 102 | 31 | 25 | M12 | 30 | 150 |



ELESA and GANTER models all rights reserved in accordance with the law. Always mention the source when reproducing our drawings.

STANDARD MACHINE ELEMENTS WORLDWIDE